



Application Note 6001

"DOP6001" (beam detector) connected to UniPOS conventional interface units

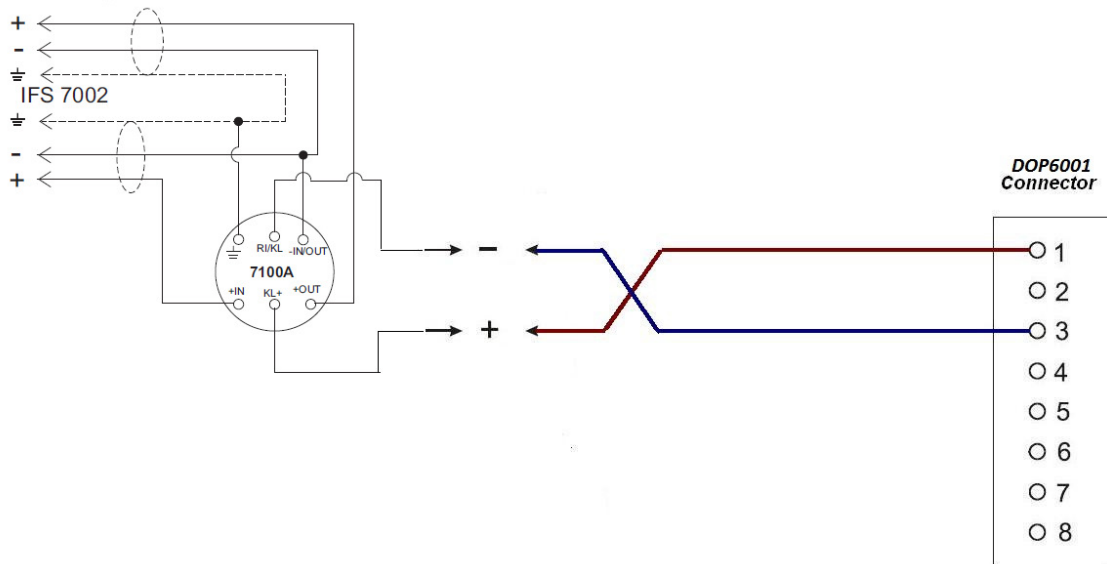
Contents:

1. Wiring Map	2
1.1. FD7201(S)	2
1.2. FS4000	2
1.3. FS5100/FS5200	3
2. Panel programming	3
2.1. IFS7002 with FD7201(S) interface unit for DOP-6001	3
2.2. FS4000 interface with DOP-6001	5
2.3. FS5100/FS5200 interface with DOP-6001	5
3. DOP6001 configuration.....	6
3.1. Jumpers set-up	6
3.2. Calibration	6
3.3. Validation.....	7

1. Wiring Map

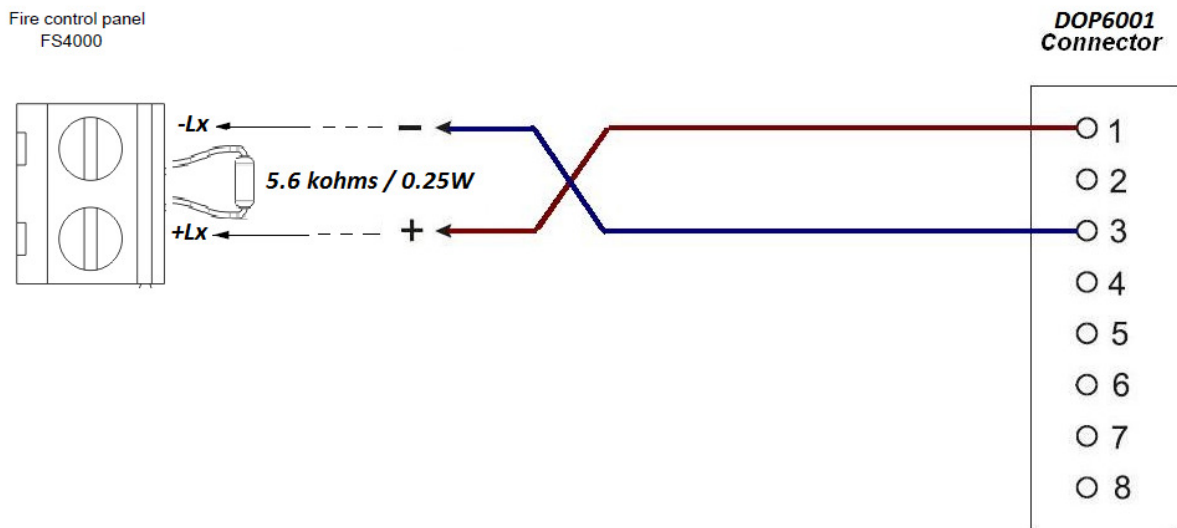
1.1. FD7201(S)

End of line element (EOL-1/EOL-2) must be REMOVED from the conventional line:



1.2. FS4000

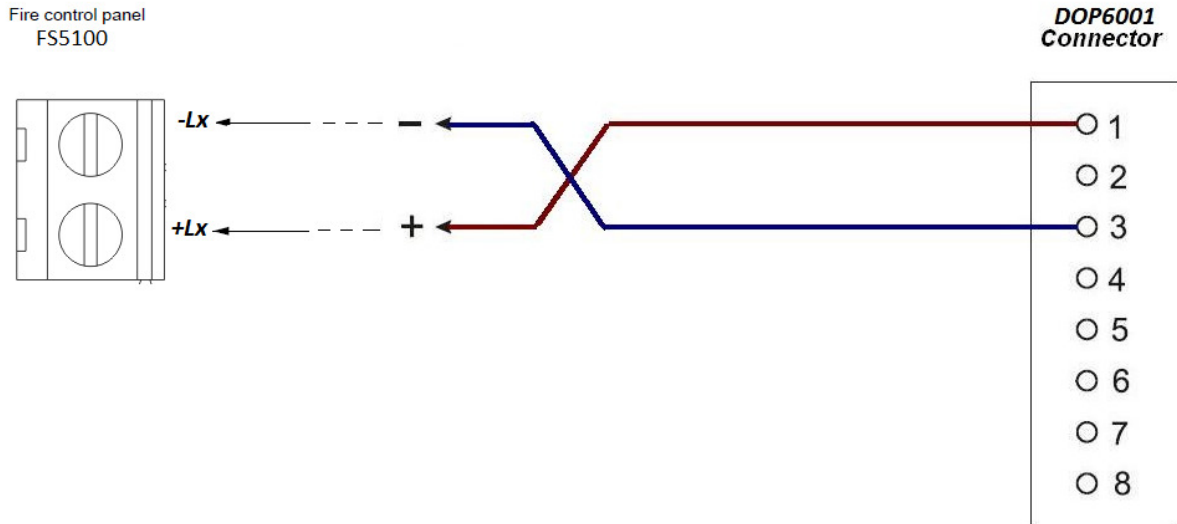
End of line element 3Kohms/0.6W must be CHANGED with 5.6Kohms/0.25W:





1.3. FS5100/FS5200

End of line element 3.9Kohms/0.25W must be REMOVED from the conventional line:

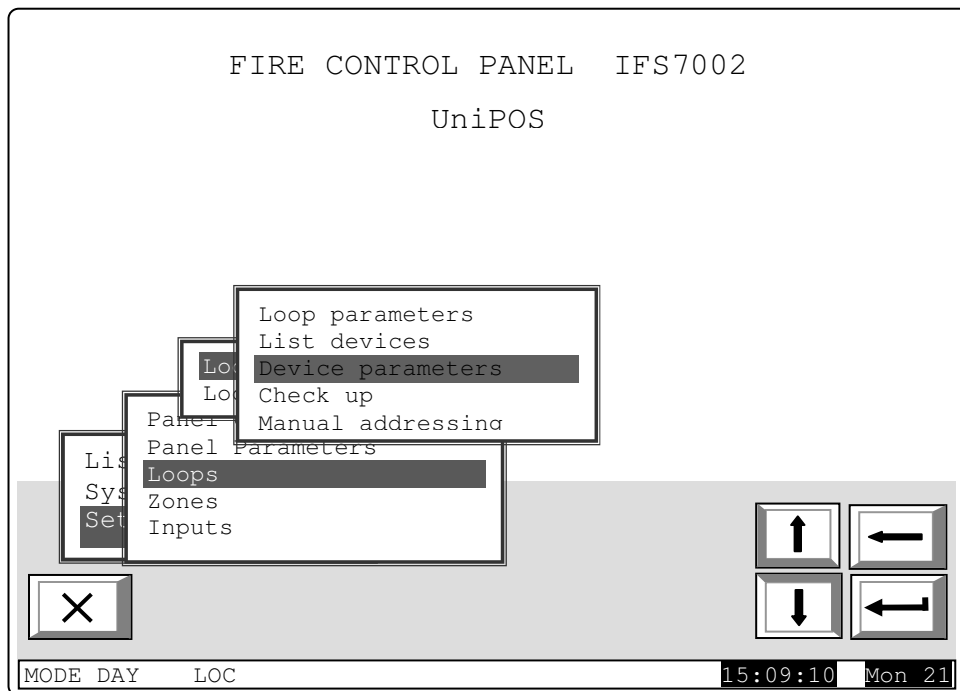


2. Panel programming

2.1. IFS7002 with FD7201(S) interface unit for DOP-6001

2.1.1. Disable the check for Removed Fire Detector on the Conventional line:

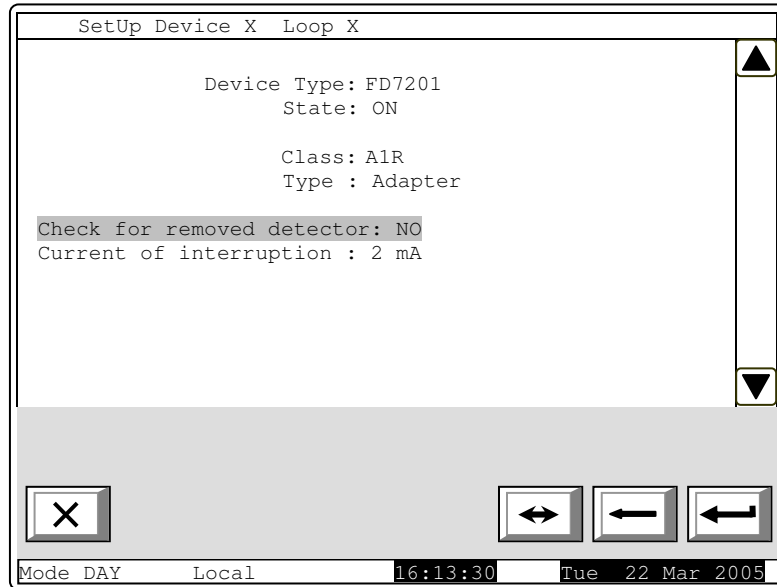
From menu "Setup > Loops > Loop 1/2 > Device Parameters > address of the FD7201/FD7201S":



Device parameters menu location



Check for removed detector – change to “NO”:

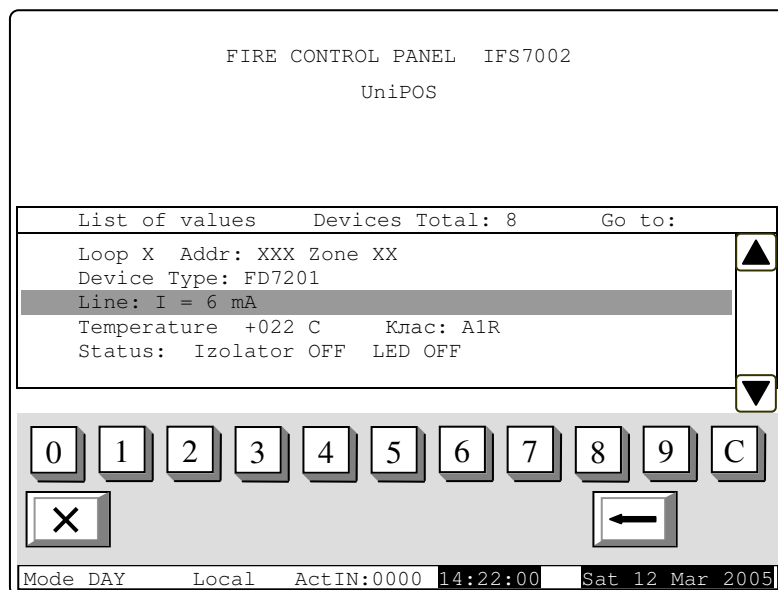


FD7201/FD7201S parameters

2.1.2. The conventional line status could be referred from menu: “lists > Devices status”:

The parameter to monitor is the conventional line current:

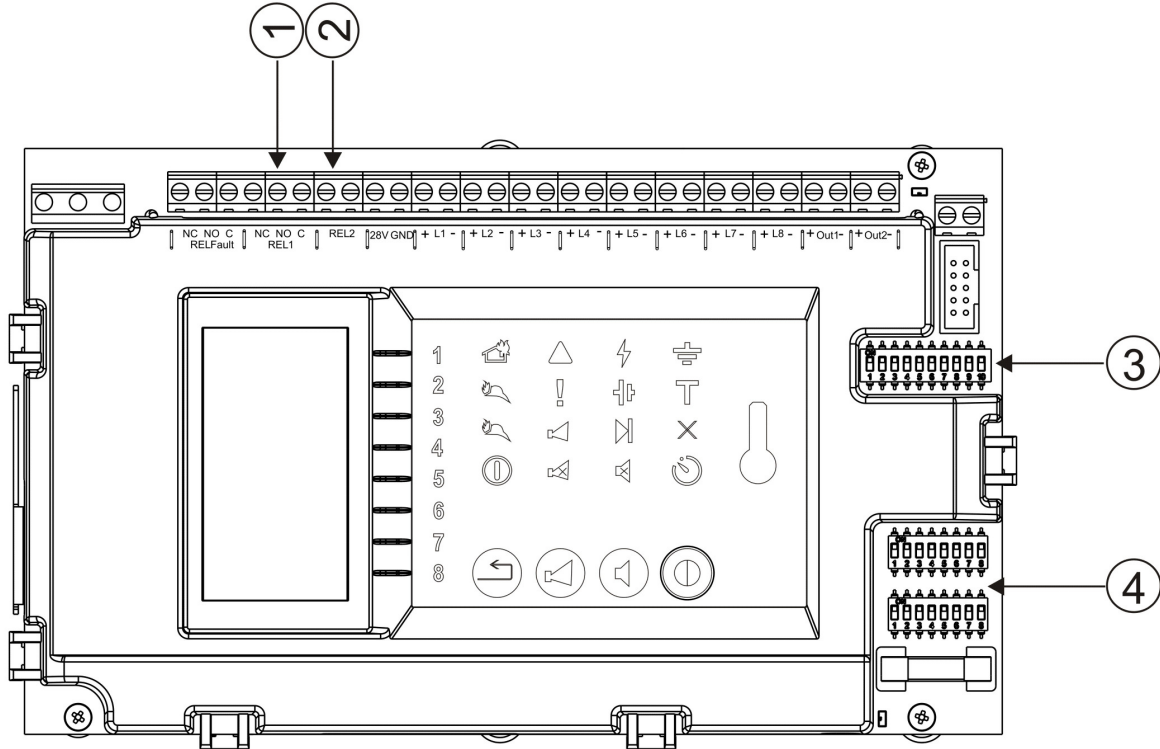
- [0 – 2], mA – Open conventional line;
- [2 – 10], mA – Duty mode;
- [10 – 50], mA – Fire mode;
- > 50mA – Short Circuit in the conventional line;



FD7201/FD7201S status

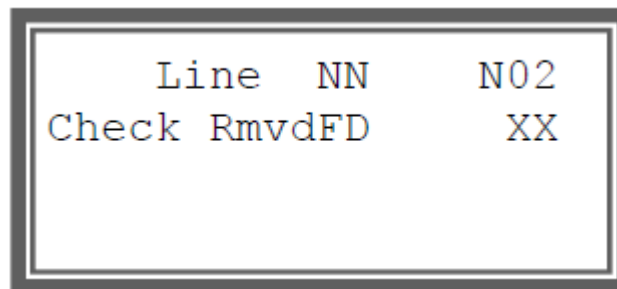
2.2. FS4000 interface with DOP-6001

2.2.1. From dip-switch, pos.3 turn-On pin1:



2.3. FS5100/FS5200 interface with DOP-6001

2.3.1. FS5200 sub-menu “System functions > Set parameters > Lines > Line NN”:



5200 sub-menu
Disable Check for Removed Fire Detector

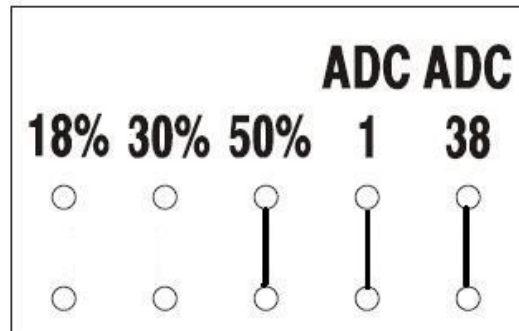
2.3.2. FS5100 sub-menu “System functions > Setup mode > Line Parameters”:



5100 sub-menu
Disable Check for Removed Fire Detector

3. DOP6001 configuration

3.1. Jumpers set-up



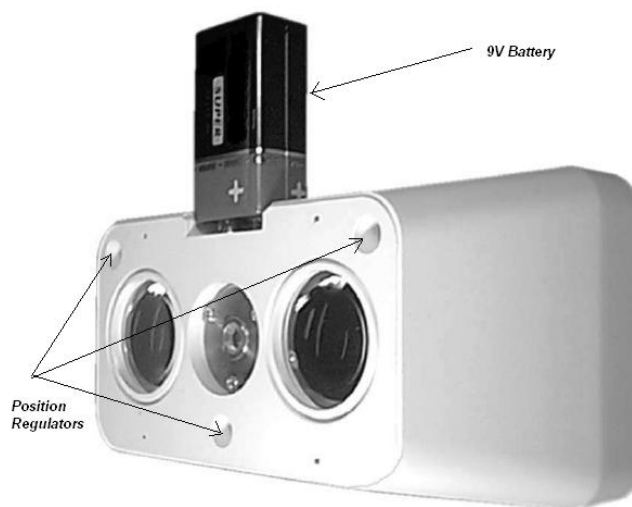
Jumpers

Three pcs. (3 pcs.) of jumpers are required for the compatibility mode of the DOP-6001 and the UniPOS conventional line interfaces:

- Jumper for Sensitivity mode – the sensitivity of the beam should be set according to the distance between the DOP-6001 head and the reflector:
 - distance from 5 m to 20 m – 18 % sensitivity is recommended;
 - distance from 20 m to 50 m – 30 % sensitivity is recommended;
 - distance from 50 m to 100 m – 50 % sensitivity is recommended;
- Jumper for compatibility mode – ADC-1 and ADC-38 must be set;

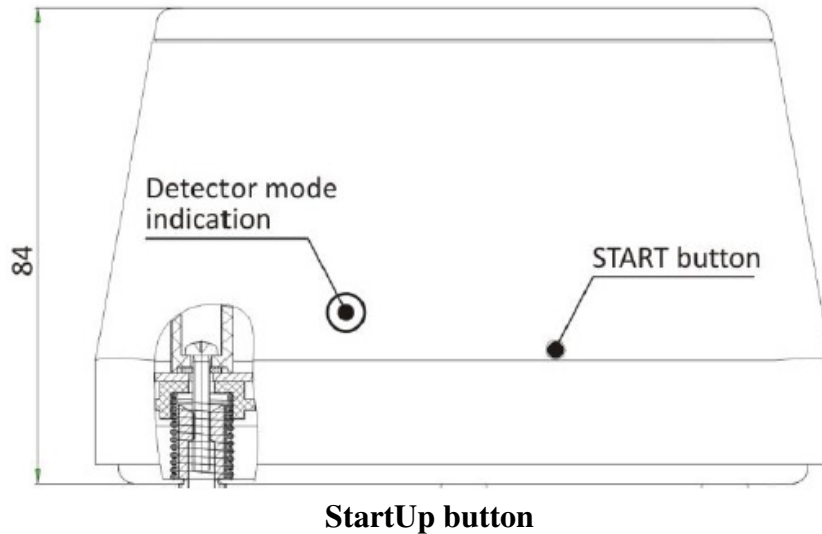
3.2. Calibration

Using 9V battery and the 3 position regulators male screws, we focus the red RAY towards the mirror.



Calibration setup tools

Remove the battery and hold the “START button”:



3.3. Validation

Test the Beam for fault and fire status:

- Fault – 100% cover (with no transparent cover)
- Fire – 75 % cover using the pattern below. We can supply you with such pattern:

